

TRAYS SUITABLE FOR RELISH, NUTS, JELLIES, SALADS AND CANDY



T9  
7" SHELL BOWL 3.75  
204A—DOGWOOD TRAY 3.25  
No Flame 3.25  
473—6½" SHELL TRAY



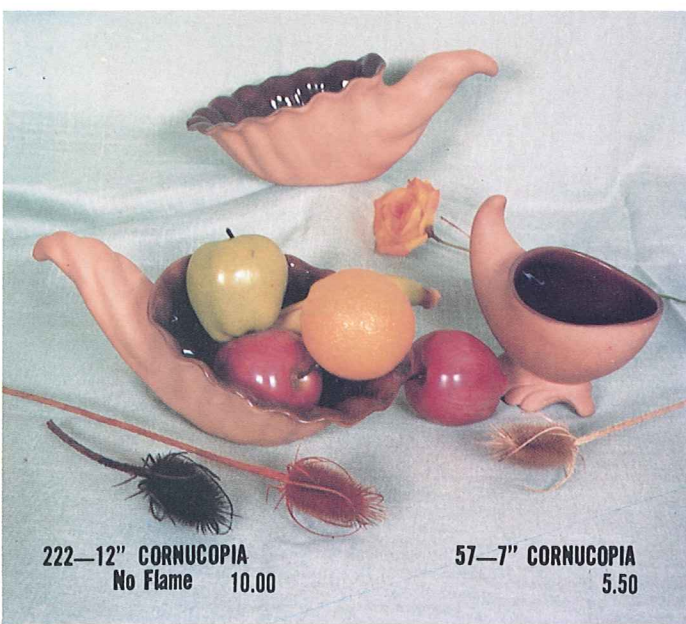
223—6" FOUR LEAF CLOVER 3.50  
83—12" Division Relish Dish 6.50  
225—7" LEAF TRAY 3.50  
Not Available in Flame or Terra Cotta.



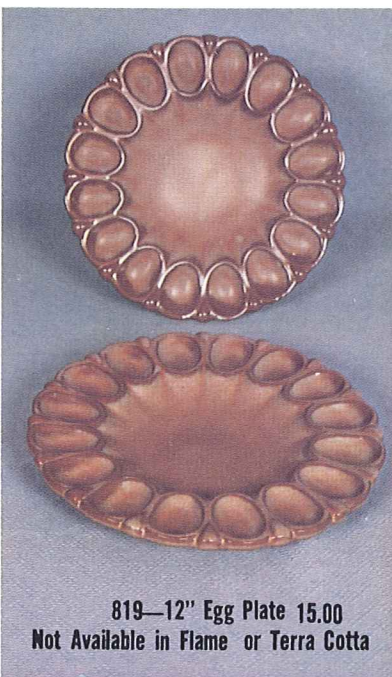
818—12" Lazy-Susan with Ball Bearing Base 22.50  
Not Available in Flame or Terra Cotta  
5QS—13" Platter (No Flame or Terra Cotta) 5.00  
6P—11" Platter 4.50  
5PS—9" Tray (No Terra Cotta) 3.75



T10—12" SHELL BOWL 17.50  
T9—7" SHELL BOWL 3.75  
(Center piece or Salad set)  
(No Terra Cotta or Flame)



222—12" CORNUCOPIA No Flame 10.00  
57—7" CORNUCOPIA 5.50



819—12" Egg Plate 15.00  
Not Available in Flame or Terra Cotta



809 - 9½" EGG PLATE 10.00  
Not Available in Flame or Terra Cotta



Not Available in Flame or Terra Cotta.

808 Relish Dish 15.00



Not Available in Flame or Terra Cotta.

227—17" LEAF TRAY 20.00  
225—7" LEAF TRAY 3.50  
228—11" LEAF TRAY 6.50



No Terra Cotta

WA1—8" Warmer w/ Candle 7.50  
WA3—6" Warmer w/ Candle 5.00